

GENDER PAY GAP 2020



TRANSFORMING LIVES EDUCATIONAL TRUST
Produced by Transforming Lives Educational Trust

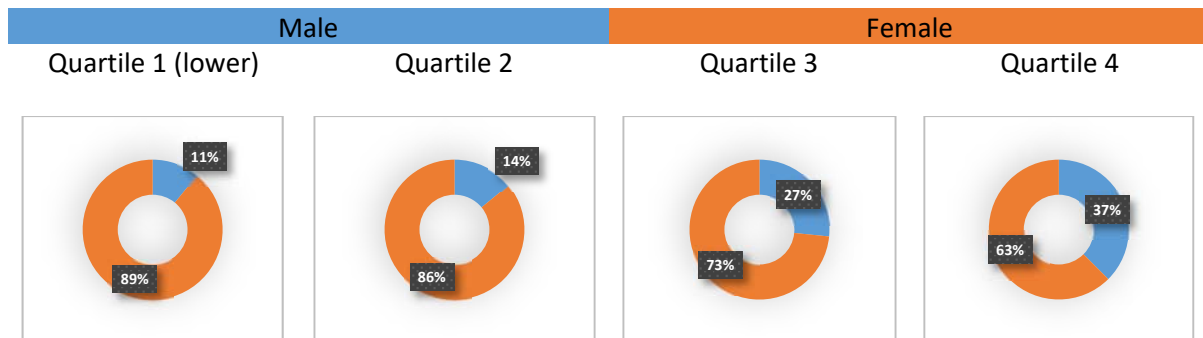
PAY DATA

Difference in hourly rate

MEAN	MEDIAN
Women's mean hourly rate is 22.95% lower than men's	Women's median hourly rate is 38.61% lower than men's

Pay quartiles

The images shows the gender distribution at Transforming Lives Educational Trust when colleagues are placed into four equally sized quartiles based on pay.



There were no bonuses paid during the year.

A handwritten signature in black ink that reads 'James Higham'.

James Higham
Chief Executive Officer and Accounting Officer
Transforming Lives Educational Trust

We confirm the data reported is accurate. In accordance with the Equality Act 2010 (Gender Pay Gap Information) Regulations 2017, Transforming Lives Educational Trust is required to carry out Gender Pay Gap Reporting